



# Three Lakes Council BEEP

Brazilian Elodea Eradication Project  
Status and Plans  
Janet Andersen  
May 15, 2009





# Summary Timeline



- August 6, 2008 – found *Egeria densa*
  - aka Brazilian elodea, a very aggressive aquatic invasive plant
- August – September
  - Validated identification & site, tried hand harvesting
  - Formulated control options
- September 19, 2008 – met with residents
  - Confirmed lake water used for households
- October – Now
  - Applied for and obtained permits
  - Updated residents – meetings, email, web, mail
  - Investigated vendors & pricing
  - Raised funds
  - Stayed in touch with experts to confirm approach



# Permit Status



- All required permits obtained
  - Army Corps of Engineers – no permit required
  - NYC DEP – no permit required
  - Office of General Services – no permit required
  - NYS DEC – no permit required, but conditions imposed on actions
  - Town of Lewisboro – permit and conditions



# Before Harvesting



- Confirm Location
  - Check if *Egeria densa* has escaped cove
  - Define area to harvest beyond current growth
- Plant Growth Traits
  - Define size of plant fragments that can grow & spread
  - Insight from Cornell aquatic plant specialists
- Install Fragment Curtain Across Cove
  - Required by Town permit
  - Supported by Three Lakes Council





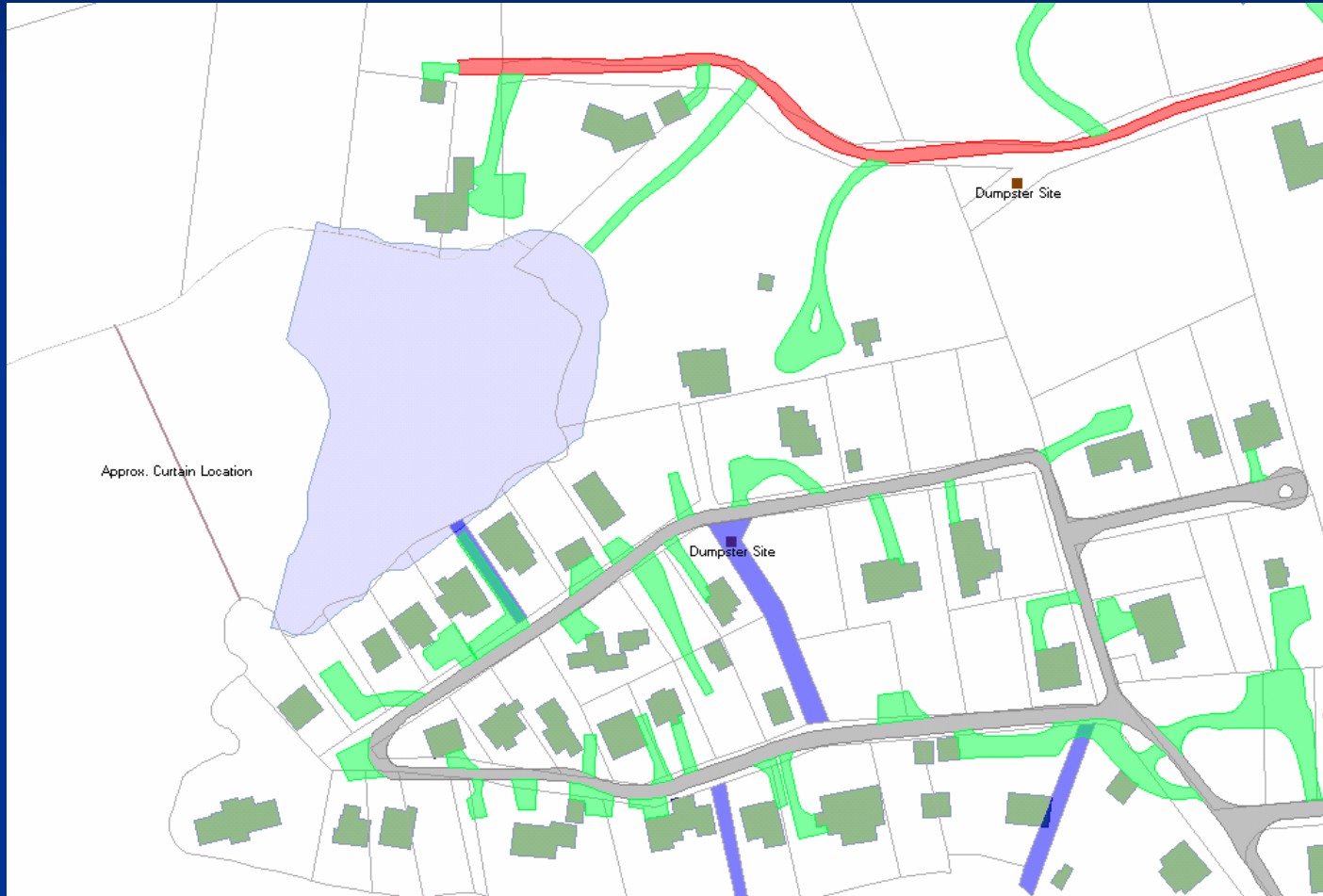
# Suction Harvesting



- Suction harvesting is hand pulling with help
  - Set up turbidity curtain around work area
  - Divers hand pull all plants and roots
  - Feed into hose for transport to bags
  - Bags transported to boat launch area
  - Bags tied to boat trailer and pulled to dumpster
  - Bags emptied into dumpster
  - Dumpster allowed to drain to reduce weight



# Activity Locations





# Next Steps



- Expect to start by end of May
- Expect harvesting will take about 3 weeks
  - Weather, unknowns may affect timing
- Oversight by “qualified limnologist / aquatic biologist” and Town wetlands inspector
  - May need to change some processes as we go
- Will have to react to situations that arise
- Appreciate continued cooperation from community



# Future Steps



- Continue to monitor for regrowth in cove and to look for possible spread to other locations
- Avoid reintroduction – not sure of source
  - Possibly aquarium
- *Egeria densa* is very tenacious
- May require repeated control actions
  - Frequently requires two or more doses of herbicides
  - Some other lakes try two controls (herbicides and carp, hand pulling and benthic barriers, etc.)



# How You Can Help



- Contribute to the “BEEP” fund
  - Thanks to all our generous contributors to date
- Avoid the North Cove of Waccabuc for now
  - Plant spreads by fragmentation
  - Could break with fishing gear, anchors, motors, or lines
- Call if you see an unusual plant
- Avoid spreading invasive species
  - Never move water between lakes, ponds, rivers, ...
  - **Check, clean, and dry** all boats, trailers, gear
  - Use only native plants in water features or koi ponds
- Stay informed – join email distribution group



- Thanks to all who have helped so far
- Questions and suggestions are welcome